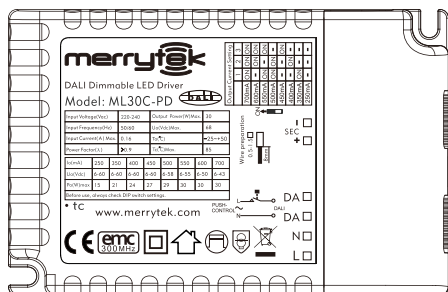




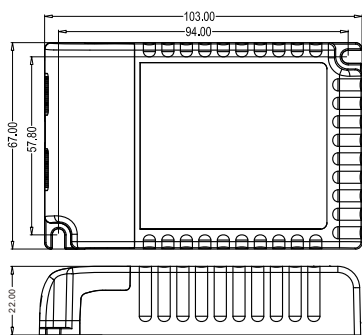
User's manual for multifunction dimmable LED driver Model NO.: ML30C-PD



- Multi output current and voltage selectable via DIP switch
- Built-in DALL interface and PUSH dimming function
- Protection: Short circuit / Over voltage / Over temperature
- Press-in terminals in primary and secondary side, easy assembly
- 5 years guaranty

SPECIFICATIONS

D



unit:mm

Model	ML30C-PD
Rated voltage	220-240V AC, 50/60Hz
Rated current	0.16A (max)
Stand-by power consumption	<0.5W
Output voltage	250mA 6-60Vdc 15W max, 350mA 6-60Vdc 21W max 400mA 6-60Vdc 24W max, 450mA 6-60Vdc 27W max 500mA 6-58Vdc 29W max, 550mA 6-55Vdc 30W max 600mA 6-50Vdc 30W max, 700mA 6-43Vdc 30W max
U-out max.	68VDC
Power factor	≥0.9
Operating temperature	Ta: -25... +50°C Tc: +85°C
Max. Efficiency	≥86%
Dimming interface	DALI, PUSH
Abnormal protection	Output short-circuit protection with auto reset
Overheating protection	Overheating protection with auto-reset
EMC standard	EN55015, EN61547, EN61000-3-2, EN61000-3-3
Safety standard	EN 61347-1, EN61347-2-13, EN60598-1, EN60598-2-6
DALI standard	IEC62386-101, IEC62386-102, IEC62386-207
Dielectric strength	Input → output : 3.75kVAC/5mA/1min
Certification	CE, EMC
Dims	See fig. D
Protection class	IP20

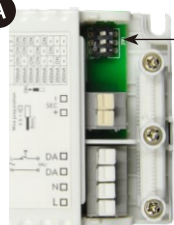
OUTPUT SELECTION

Different configurations of DIP switches are used for different LEDs.

NOTE:

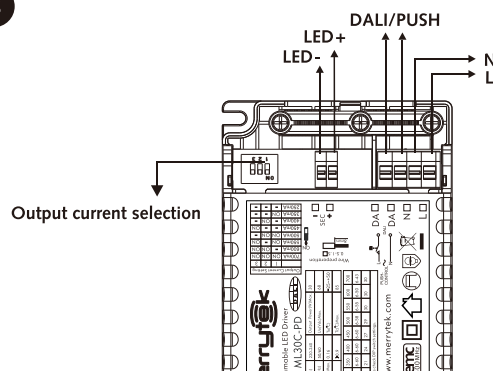
1, Before use, please make sure the correct selection of DIP switches!

A



Output Current Setting			
	1	2	3
700mA	ON	ON	ON
600mA	-	ON	ON
550mA	ON	-	ON
500mA	ON	ON	-
450mA	-	-	ON
400mA	-	ON	-
350mA	ON	-	-
250mA	-	-	-

B



Connection

1. Start with setting the output current and voltage which are easily configured by choosing the correct combination of the DIP switches (see table, fig. A).
2. Connect the luminaires to the driver according to the wiring diagram (see fig. B).

Push Button Switch for Dimming (no. 3 fig. B and C)

- On/Off: Short push (0.1-1s) on the switch.
- Stepless dimming: Long push (>1s) on the switch.
- For fine tuning of light level: With every other long push, the light level goes the opposite direction.
- Built-in with permanent memory: Light returns to the previous dimming level when switched off and on again, even at power failure.

Synchronization FOR PUSH-CONTROL MODE ONLY (see wiring diagram, fig. C)

Up to 15 pcs drivers can be connected to the same switch, thanks to the programme. This means there is no need for any additional synchrony wire in larger installations, where many drivers should be controlled by one switch.

For the synchronization to work correctly when more than one driver is connected to the same push button, please follow the step below after the drivers are connected:

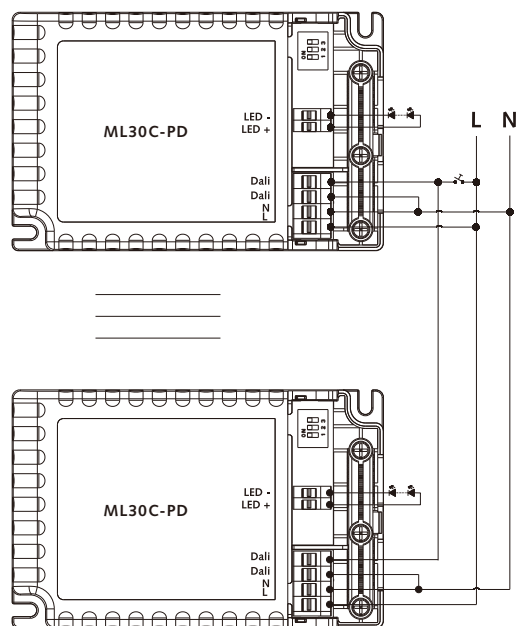
Do a long push (>15s), the system will now be synchronized.

The LED driver supports push dimming function. Push-control and DALI interface can not be connected simultaneously

⚠ Warning: Please make sure the correct current is set before starting the driver!

C WIRING DIAGRAM

Push-control wiring diagram



DALI wiring diagram

